

# Office to let

## BASP Victoria Offices

Bucharest, Sector 1, Bucuresti - Ploiesti street

### Building information

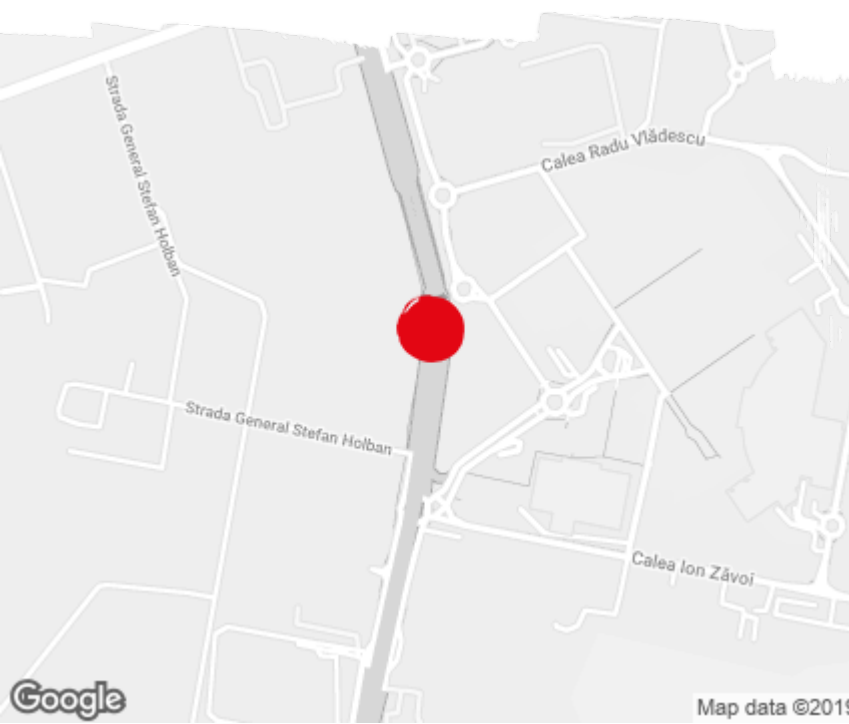
Building status	Existing
Year of construction	2018
Parking ratio	1 / 25 sq m
Total building area	5 500 sq m

### Commercial terms

Office space*	after login *
Parking	after login *
Service charge*	after login *
Minimum lease term	after login *
Availability	after login *

\* Asking terms for m<sup>2</sup>/month

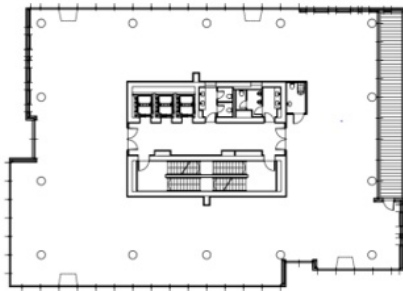
### Location



### Available space

Building completely leased

Typical floor plan



Public transport

Bus: 131, 205, 261, 304, 335, 449

Contact



+40 21 302 3400

More information